



1451 WELLINGTON

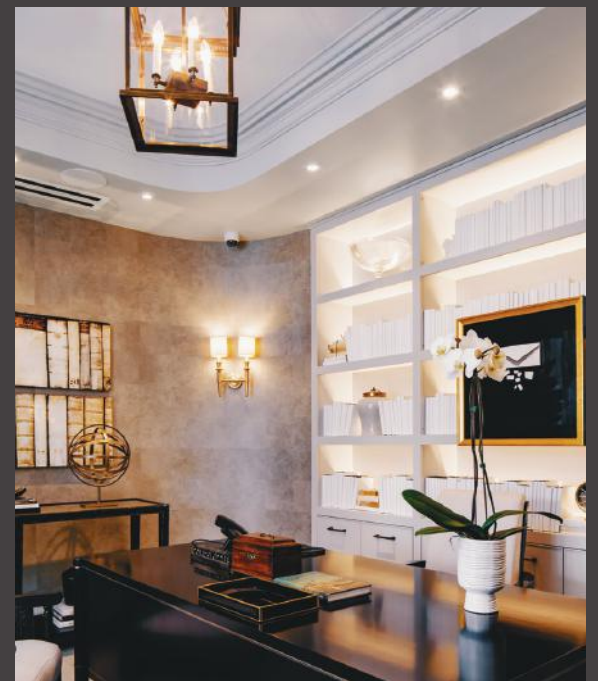
The Residences at Island Park Drive

Craftsmanship From a Lost Era Is New Again

We live in an era besotted with the new and the fast, and that is why, in the vision for 1451 Wellington West in Ottawa, we turned our attention to what has been lost.

Officially designated as a landmark building, 1451 Wellington West features a copper mansard roof and pale limestone on the exterior. Inside, the craftsmanship continues with coffered ceilings, curvilinear walls, hand-crafted wood paneling and marble floors. European hardwood floors are installed on site. Italian marble is painstakingly matched for perfect alignment in your kitchen and bathrooms.

We also have an old-world approach to service. At 1451 Wellington West, you can also custom-design your own home with up to 4 bedrooms in any configuration you want. We allow for maximum flexibility in making your home a reflection of the life you have built.



VISIT OUR PRESENTATION GALLERY ON SITE AT 1451 WELLINGTON STREET WEST, IN OTTAWA.
Monday–Friday: 9am–7pm, Saturday: 10am–6pm, Sunday: 11am–5pm

1451Wellington.ca



613-798-4663